

Knights
Beige

BÂTIR, DIFFÉREMMENT.

Le Barista

6701 avenue Papineau,
Montréal (Rosemont)



COMMERCIAL SPACE FOR RENT OF
615 SQ.FT.


aurora

THE SPACE

Available

- Spring / Summer 2019

Features

- Ground Floor of 615 sq. ft.
- Corner Location
- (Between Ave Papineau/St-Zotique)
- Frontage
 - Ave Papineau +/- 27'10" linear feet
 - St-Zotique +/- 22'2" linear feet

Terms & Conditions

- Term: 5 or 10 years
- Asking Gross Rent: \$2500.00 per month

The Neighbourhood

- Fabre Subway Station – A 9-minute walk
- Neighbourhood is located in the heart of the Island of Montreal

STATISTICS

(Radium of 3 km)

Population

- 20 to 44 years old: 46,7% (Avg Age of 36,9)
- Daytime population of 223 586
- At work = 41,9%

Average Household Income

- 1 km = \$62 305
- 3 km = \$63 605
- 5 km = \$65 767
- Over 60 000\$ = 36,3% (3 km)

Education

- College = 14,6%
- University = 42,9%

Market Potential

- Food 1,226G\$
- Restaurants 450M\$
- Health Care 407M\$
- Personal Care 258M\$

Le Barista

6701 avenue Papineau,
Montréal (Rosemont)

SERIE **NATURE**

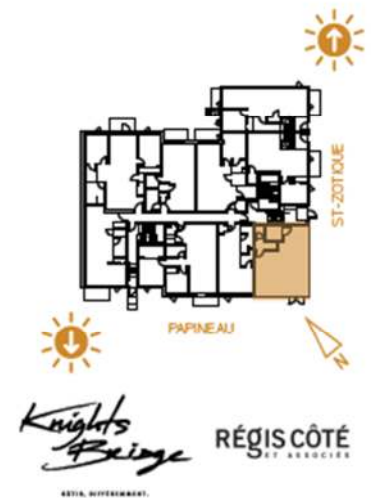
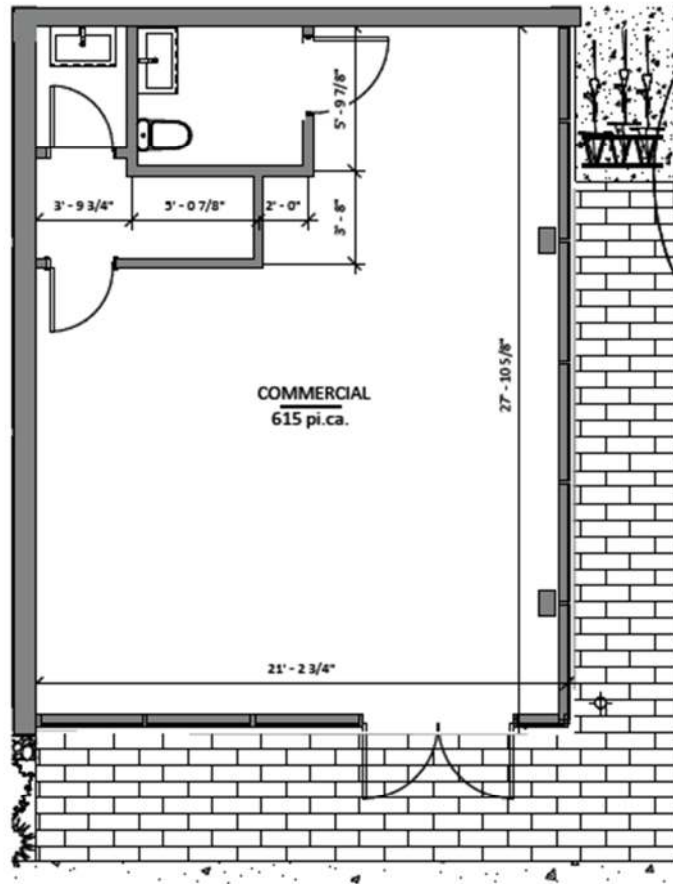
Le Barista

6701 avenue Papineau,
Montréal (Rosemont)

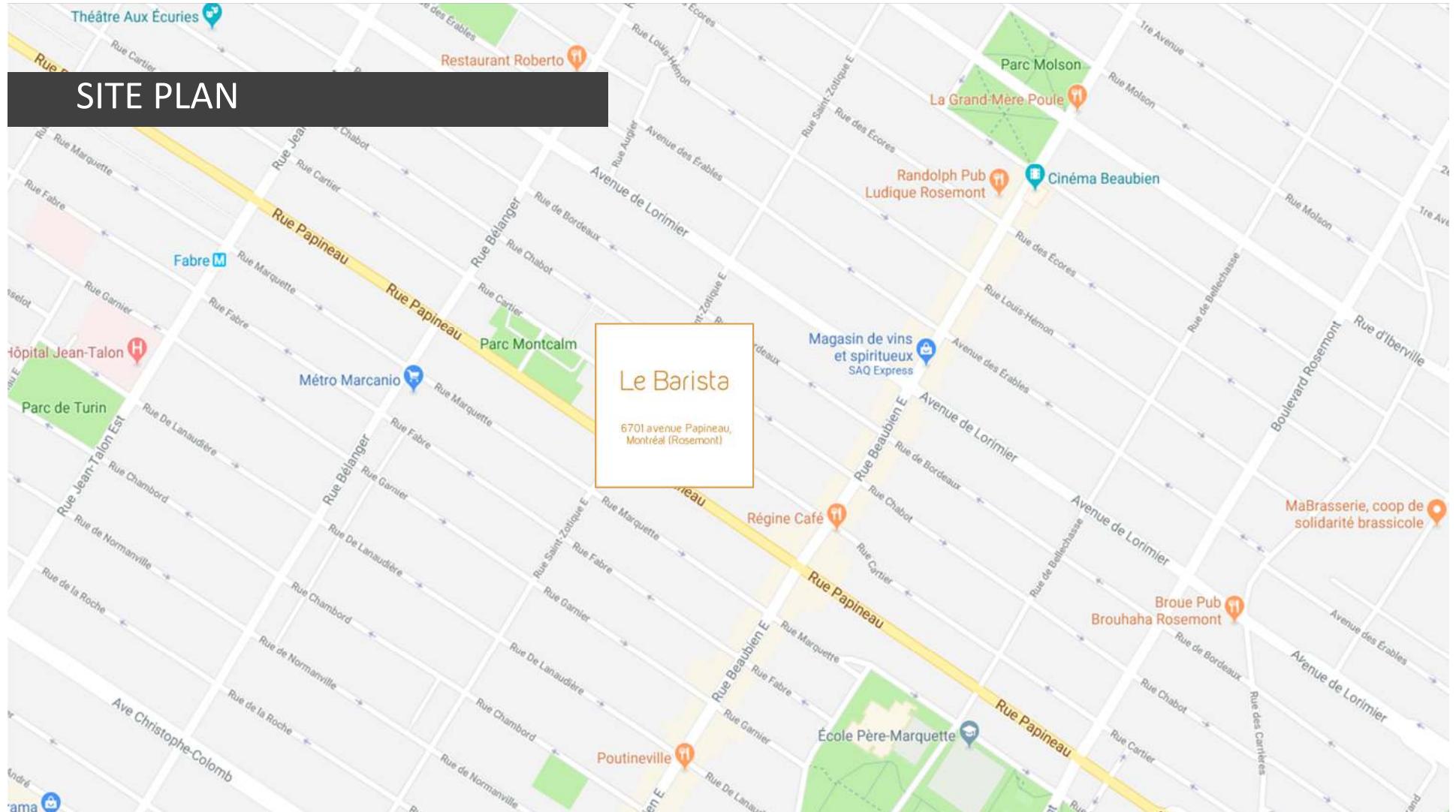
Commercial

NIVEAU 1

SUPERFICIE/AREA : 615 pi²



SITE PLAN



MANON PARISENIEN

Real Estate Broker
Senior Vice President & COO
M (514) 627-0321
E mparisien@auroraconsultants.com

6701

PAPINEAU, ROSEMONT

JOSHUA HASEN

Real Estate Broker
Director – Urban Development
M (514) 909-3300
E jhasen@auroraconsultants.com

